

WHO WE ARE

IBL at a Glance

Group Structure

“ Espace Maisson's digital transformation journey aims to provide an omnichannel experience to its customers. From the launch of its e-commerce platform and the recent addition of a Scan and Go feature, to the anticipated launch of budget calculation tools and the use of Virtual Reality to design and decorate rooms prior to purchase, everything is conceived with the customer experience in mind.

IBL at a Glance

A leading diversified Group

Our mission

As a diverse and responsible corporate citizen, we enhance the talent of our people and inspire them to better serve our stakeholders in a trustful, open and efficient way.

Our vision

Creating a brighter future for all.

Our values

People first, Passion, Integrity, Excellence, Responsibility and Creativity.



26,993
team members



12,692
shareholders

9
clusters

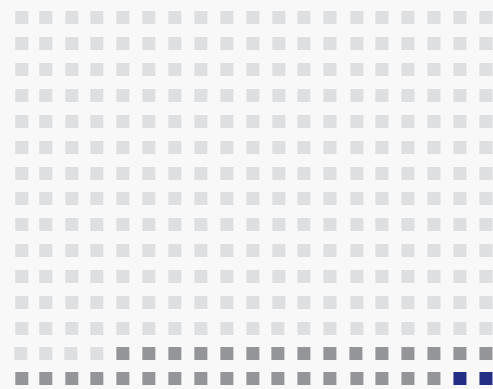


- AGRO
- BUILDING & ENGINEERING
- COMMERCIAL
- FINANCIAL & OTHER SERVICES
- HOSPITALITY
- LIFE
- LOGISTICS
- MANUFACTURING & PROCESSING
- PROPERTY

285
companies
(including IBL)



- 251 SUBSIDIARIES
- 32 ASSOCIATES
- 2 JOINT VENTURES



9 listed companies

3 companies on the SEMSI



1st Mauritian Group
In terms of market capitalisation
(excluding financial institutions)

Group revenue

Rs **39.26**Bn

Profit from operations

Rs **2.22**Bn

Total assets

Rs **60.44**Bn

We created value for...



Our shareholders

Rs **1.1Bn**
total dividends paid
(Group)

Rs **0.57**
earnings per share from
continuing operations



Our team members

Rs **51.07M**
investment in training

53%
women in the
Corporate Centre



Our community
through Fondation Joseph Lagesse

2,513
direct beneficiaries

including
840 children
807 women and girls

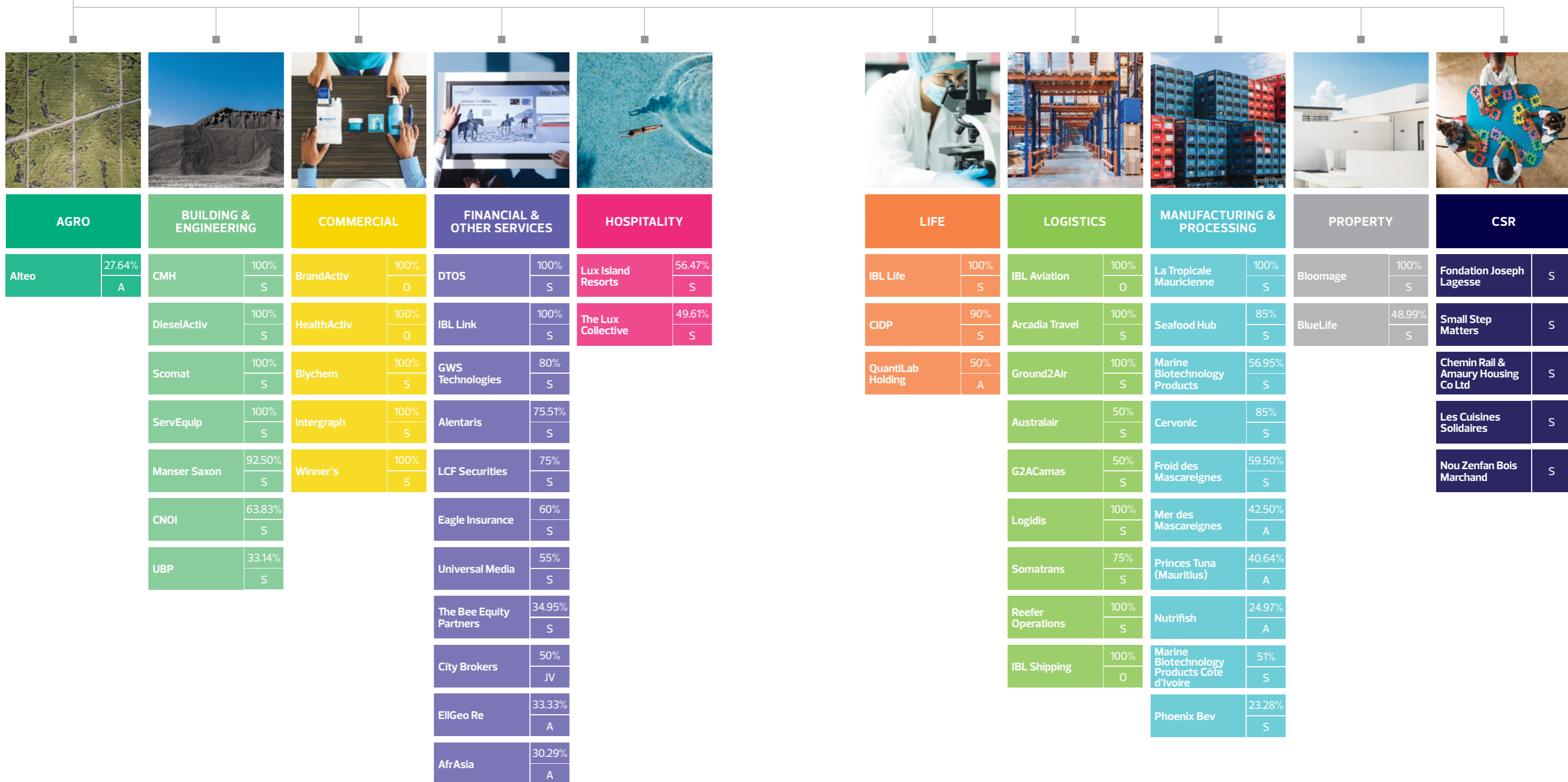
IBL at a Glance

A global presence

IBL is present in 22 countries:

Brazil	Mauritius
China	Romania
Comoros	Reunion
Dubai	Seychelles
France	Singapore
Gabon	South Africa
India	Sri Lanka
Ivory Coast	Tanzania
Kenya	Turkey
Madagascar	Uganda
Maldives	UK

Group Structure



(A) Associate | (JV) Joint venture | (S) Subsidiary | (O) Operation